

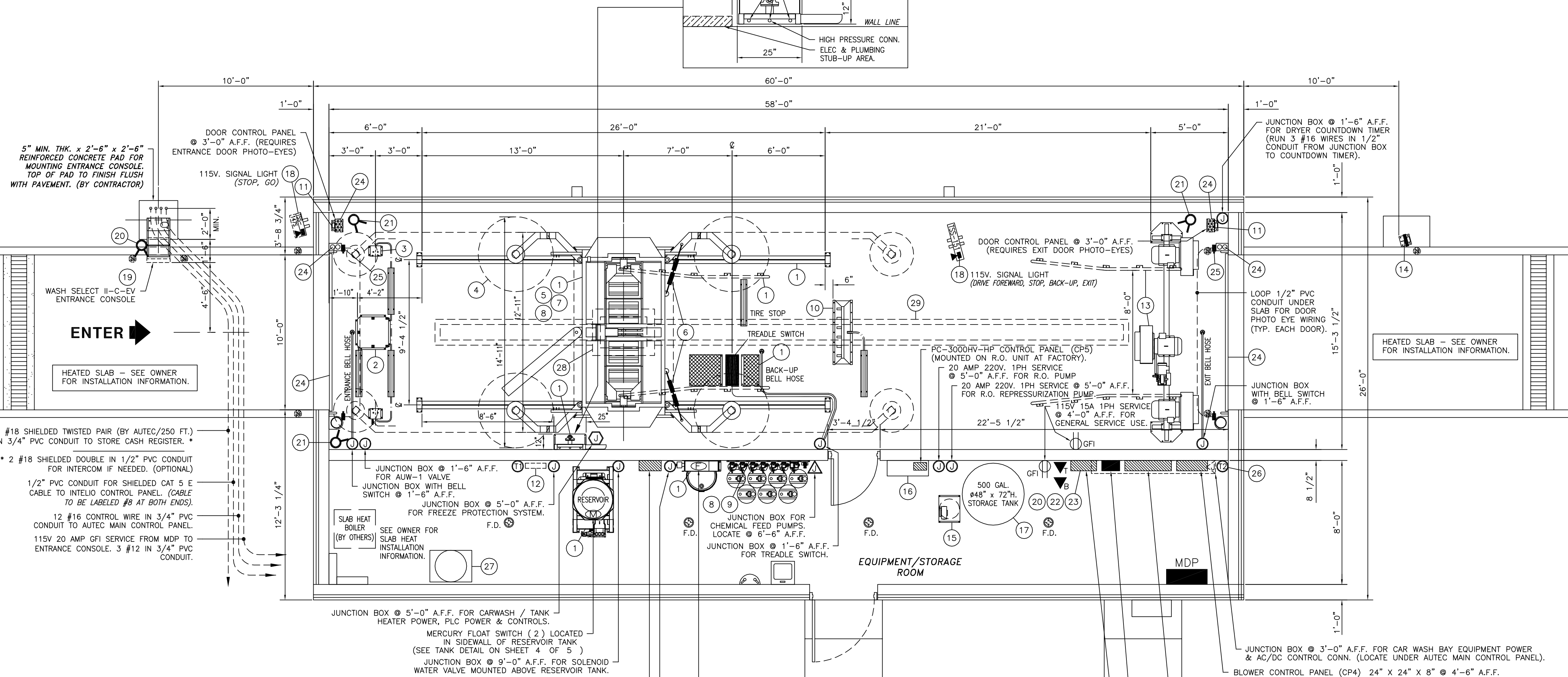
ITEM	PART No.	DESCRIPTION	QUAN.
29		TRENCH DRAIN w/ FRAME & GRATE (BY OWNER)	1
28	CB-1	PRECAST CONCRETE CATCH BASIN w/ FRAME & GRATE (BY OWNER)	1
27		AIR COMPRESSOR, 3PH, 5 HP, 60 GAL. VERTICAL TANK, 19 CFM @ 125 PSI (BY DEALER)	1
26	T-STAT	FREEZE PROTECTION THERMOSTAT FOR DOOR OPERATION (BY OTHERS)	1
25		ELECTRIC EYE SETS - (SEND & RECEIVE), FOR BAY DOOR OPERATION (BY OTHERS)	2
24		10'W. x 10'H. POLYCARBONATE DOOR w/OPERATOR & CONTROLLER (BY OTHERS)	2
23	WMDIK	DISTRIBUTOR INSTALLATION KIT (REQUIRED FOR WMOIS INSTALLATION, ONE TIME PURCHASE)	1
22	WMPPI	PPI MULTI-MASTER CABLE. (REQUIRED FOR WMOIS INSTALLATION-SEMENS INTERFACE CABLE)	2
21	WMCU	WASHMAX MULTI-CAMERA UPGRADE (3 ADDITIONAL STILL CAMERAS, MOUNTED IN BAY)	1
20	WMOIS	WASHMAX OPERATIONAL INTELLIGENCE SYSTEM, POWERED BY INTELIO, HOUSED INSIDE A SECURE ENCLOSURE INSTALLED IN EQUIPMENT ROOM, THE WASHMAX OIS GIVES 24/7 COMPLETE CAR WASH MONITORING, VIA INTERNET, FROM ANY LOCATION. INCLUDES ONE STILL PICTURE CAMERA THAT MOUNTS INSIDE ENTRY SYSTEM. WSII OR WSII-POS WITH PROPER INTERFACE CHIP REQUIRED. A MONTHLY MONITORING FEE OF \$50.00, BILLED BY INTELIO, WILL APPLY.	1
19	WS II-C-EV	WASH SELECT ENTRY SYSTEM w/STAND-ACCEPTS RANDOM CODES, COINS, BILLS, CREDIT CARDS, COUPONS & FLEET CODES. GIVES CHANGE. INCLUDES VOICE MESSAGING OPTION, PROXIMITY SENSOR. INCLUDES POS 4000.	1
18	TSS-1S	AUTEC STANDARD SIGN PACKAGE CONSISTING OF: (1) TSS-147S 2 LIGHT CABINET WITH SUNSHIELD AND (1) TSS-151B 29\"/>	1
17	T-500	500 GAL. CAPACITY POLYETHYLENE STORAGE TANK - #48\"/>	1
16	PC-3000HV-HP	PUR-CLEAN SPOT FREE RINSE SYSTEM - WALL MOUNT (3000 GPD) WITH 2 CU. FT. CARBON FILTER WITH AUTO BACKFLUSH & (SFHV-HP) 3 HP REPRESSURIZATION PUMP; AUTOMATIC MEMBRANE BACKFLUSH; 27 GPM @ 80 - 100 PSI OUTPUT. (INSTALLED BY OTHERS)	1
15	ROCS	AUTEC R/O CHEMICAL SUPPLY SYSTEM - INCLUDES A 14 GAL. BLADDER TANK w/STAND, 1/2\"/>	1
14	ACT-99-S	COUNTDOWN TIMER w/STAND - STAINLESS STEEL CASE - DRYER TIME DISPLAY	1
13	BFS-45-OSC	AUTEC 45 HP TOUCHFREE BLOWER. (3) 15 HP STAINLESS STEEL ENCLOSED OVERHEAD FANS. CENTER 15 HP FAN HAS OSCILLATING ACTION. INCLUDES MOTOR STARTER. 175 AMP SERVICE REQUIRED.	1
12	AFP-EV1	AUTOMATIC FREEZE PROTECTION PACKAGE (SEE SHEET 4 OF 5 FOR DETAILS)	1
11	AUP-ADP	AUTEC UTILITY POST FOR AUTOMATIC DOOR CONTROL PANEL - STAINLESS STEEL	1
10	CBA-1-SS	BUG BUSTER (STAINLESS STEEL) - APPLIES GRIME BUSTER PRE-SOAK TO FRONT OF VEHICLE TO ENHANCE REMOVAL OF BUGS AND TAR. INCLUDES CHEMICAL STATION.	1
9	APS-1C	AUTEC CHEMICAL PUMPING STATION - WALL MOUNT WITH CLEAR PVC MIXING CANISTER, INCLUDES SINGLE AIR PUMP FOR CHEMICAL DELIVERY (MAX. DRYING AGENT)	2
8	AFS-4	AUTEC TRIPLE FOAM - 4 ACRYLIC CHEMICAL HOLDING CHAMBERS (3 SOAPS, 1 WAX). INCLUDES 2 EXTRA CHEMICALS (CHERRY & YELLOW), EXTRA NOZZLES AND HARDWARE FOR A TOTAL OF 48 DISTRIBUTION POINTS, INCLUDES (2) CHEMICAL PUMPING STATIONS.	1
7	OBRCK	ON-BOARD RINSE CONVERSION KIT FOR SECONDARY ON BOARD WATER SUPPLY. INCLUDES EXTRA VALVE, MANIFOLDS, ETC.	1
6	AST-1	SAFE TAG FRONT LICENSE PLATE PROTECTOR - (2) TWO STAGE SIDE BRUSH CYLINDERS	1
5	ATB-1	TREADLE BUZZER	1
4	PFU-1	SOFT TOUCH POLYFLEX UPGRADE ON NEW MACHINE VS. SOFT CLOTH	1
3	ACTA-1	AUTEC REMOTE CHEMICAL TIRE APPLICATOR w/PUMP	1
2	AUW-1-SS	AUTEC UNDERCARRIAGE WASH - STAINLESS STEEL	1
1	EV-1	AUTEC EVOLUTION SOFT TOUCH/TOUCHLESS COMBINATION VEHICLE WASHER - ALL STAINLESS STEEL WITH COMPLETE MITTER RETRACT (FORE AND AFT), WATER BASED HYDRAULICS, TANK HEATER, STAINLESS STEEL GUIDE RAILS, TREADLE RAMPS & TIRE STOPS. ON-BOARD RINSE CAPABILITY, SOAP PUMPING STATION, OFFERS SEVEN WASH PACKAGES AND CUSTOM WASH SETUP CAPABILITIES. HEATED PRE-SOAK TANK WITH DELIVERY PUMP. EQUIPPED w/ QUICK RELEASE DOOR PANELS, GREASELESS BEARINGS, NOSE SCRUBBER AND REAR JOG FEATURES. GANTRY JOG SWITCH IN CONTROL PANEL. INCLUDES EXTERIOR TWO LIGHT PACKAGE. TOUCHLESS PORTION OF MACHINE INCLUDES A 20 HP PUMPING STATION THAT PUMPS UP TO 35 GPM OF WATER THROUGH 48 OSCILLATING NOZZLES, EIGHT ADDITIONAL ON-BOARD TURBO NOZZLES ARE INCLUDED FOR SPRAYING TIRES, WHEELS & ROCKER PANELS. (INCLUDES WATER TANK TO FEED PUMPING STATION & BAY ROOM).	1

PLAN VIEW
SCALE: NONE

ISOMETRIC VIEW
SCALE: NONE

ITEM 14
SCALE: NONE

ITEM 19
SCALE: NONE



GENERAL NOTES:

- ALL WIRING TO BE IN CONDUIT (BY ELEC. CONTRACTOR). WIRE TO TREADLE SWITCH TO BE IN RIGID CONDUIT (BY ELEC. CONTRACTOR).
- ALL JUNCTION BOXES TO BE WATERPROOF TYPE - SEE SCHEDULE ON SHEET 2 OF 5 FOR SIZES.
- 50 AMP 208/230V 3PH DISCONNECT REQUIRED ONLY IF MDP IS LOCATED IN SEPARATE AREA OR IF MDP IS MORE THAN 50'-0" AWAY FROM "AUTEC" MAIN STARTER BOX. (VERIFY WITH LOCAL CODES)
- ALL WIRING TO BE "THWN" OR EQUIVALENT.
- ALL ELECTRICAL, PLUMBING & COMPRESSED AIR LINES AND CONNECTIONS ARE THE RESPONSIBILITY OF THE OWNER/GENERAL CONTRACTOR AND ARE TO BE MADE BY QUALIFIED LICENSED PERSONNEL TO MEET STATE AND LOCAL CODES. NEITHER AUTEC OR THEIR REPRESENTATIVES SUPPLY OR INSTALL THESE ITEMS.
- ALL MOUNTING HEIGHT DIMENSIONS STATED ON DRAWINGS ARE TO THE BOTTOM OF ITEM. (A.F.F.) = ABOVE FINISHED FLOOR.
- DOOR HEIGHT OPENING MUST BE 10'-0" MIN.
- INSIDE HEIGHT CLEARANCE FOR CAR WASH EQUIPMENT MUST BE 10'-8" MIN.
- BUILDING BY OTHERS.

NOTE:
ALL REQUIRED ELECTRICAL AND PLUMBING ITEMS ARE TO CONFORM TO STATE AND LOCAL CODES.

NOTE -
THE INFORMATION ON THIS DRAWING IS PRESENTED AS A GUIDE AND REFERENCE ONLY AND IS SPECIFICALLY NOT FOR CONSTRUCTION.

POWER & LAYOUT PLAN
SCALE: 1/4" = 1'-0"

SEE SHEET 2 OF 5 (POWER & EQ. 2)
FOR LOADS AND WIRING DETAILS.

EQUIPMENT LIST			
NO.	DATE	DESCRIPTION	BY
A PROPOSED PLAN OF: LITTLE DUKES PRINCETON, MINNESOTA			
PRESENTED BY: AUTEC Car Wash Systems - Copyright 2001			
POWER AND EQUIPMENT			
1			
NO.	DATE	DESCRIPTION	BY
REVISIONS			
DRAWN BY:	CMR	ENGINEER:	
CHECKED:			
DATE:	01-25-2007	DRAWING NO.:	EV1-0114
SCALE:	AS SHOWN	SHEET	1 OF 5